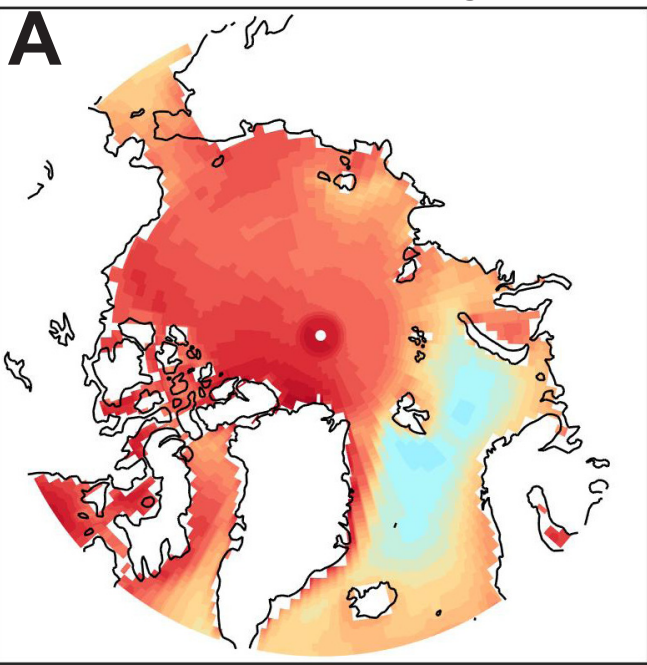


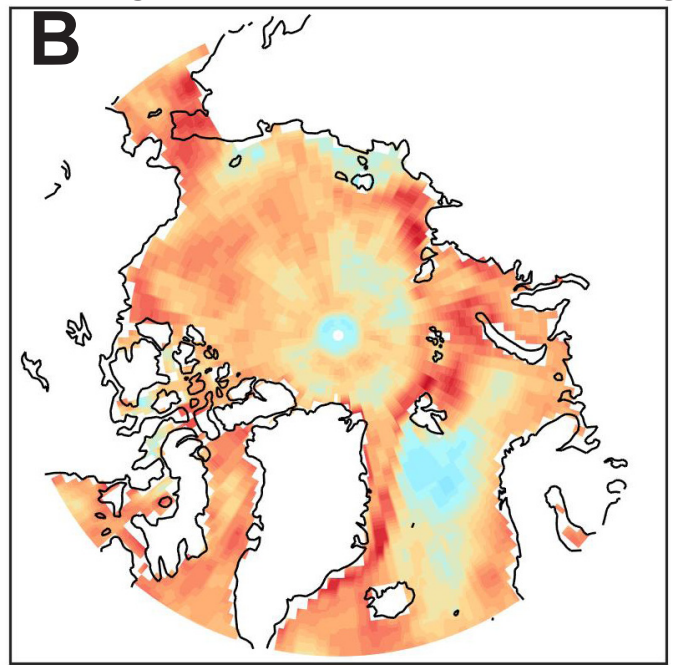
### Radiative sensitivity

### Uncertainty in Radiative sensitivity



W m<sup>-2</sup> into system per 0.01 albedo decrease

0 0.5 1.0 1.5 2.0 2.5

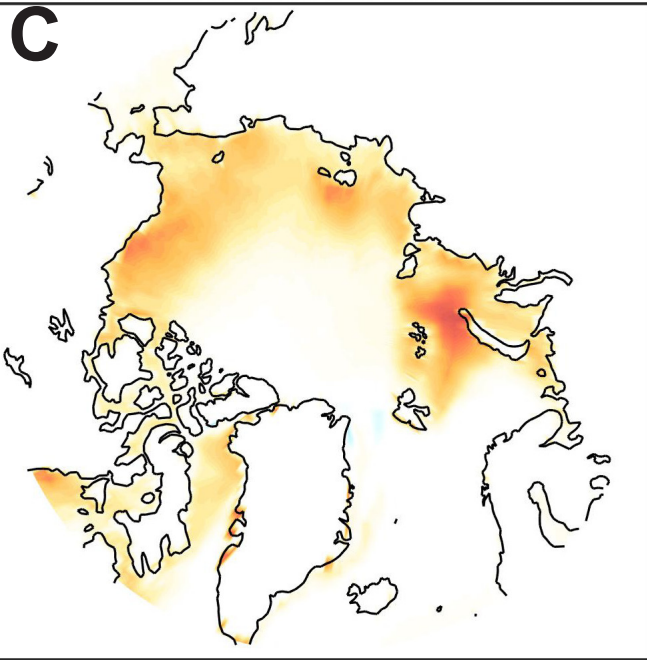


2σ of RS (W m<sup>-2</sup> per 0.01)

0 0.05 0.10 0.15 0.20 0.25

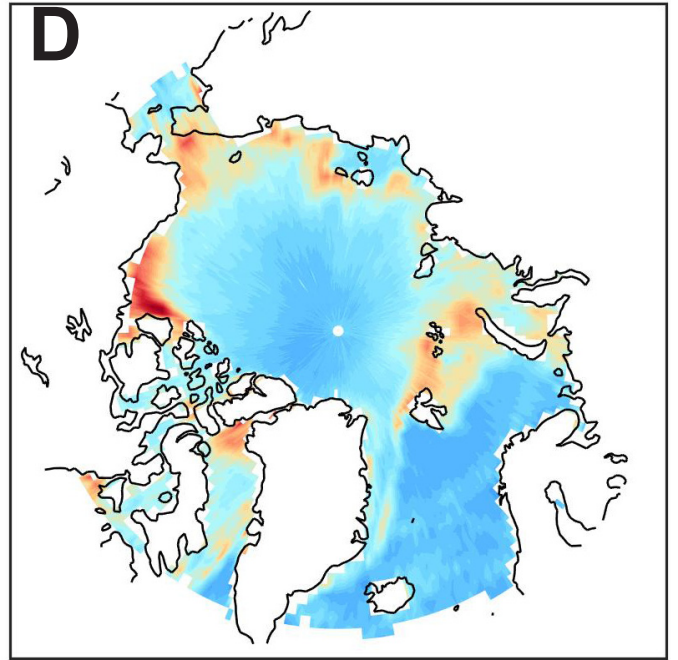
### Observed Ice sensitivity

### Uncertainty in Ice Sensitivity



Ice sensitivity -- Albedo change per K

-0.3 -0.2 -0.1 0 0.1 0.2 0.3

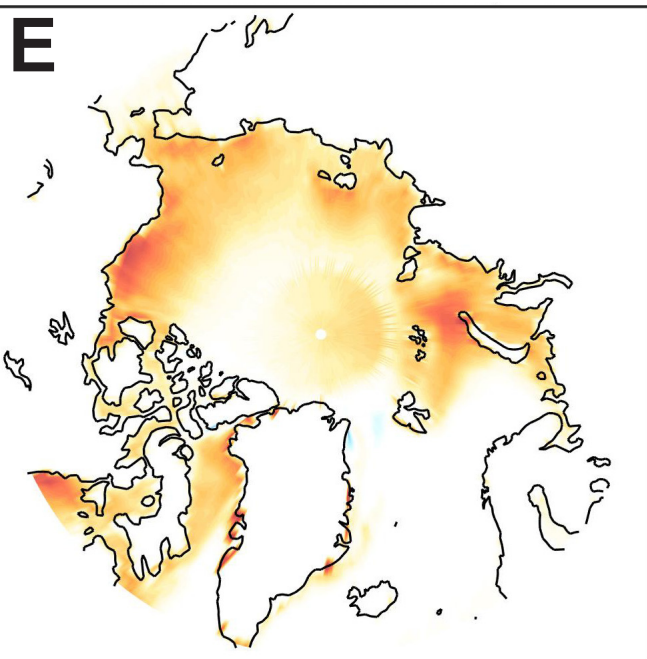


2σ Ice sensitivity (albedo per K)

.02 .06 .10 .14 .18

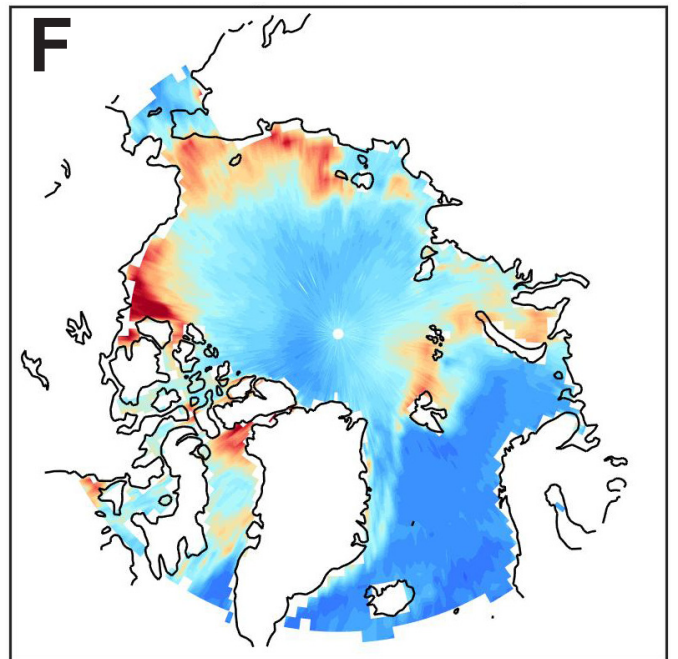
### Radiative Impact of Albedo

### Uncertainty in Radiative Impact



Radiative Impact (W m<sup>-2</sup> K<sup>-1</sup>)

-40 -30 -20 -10 0 10 20 30 40



2σ Radiative Impact (W m<sup>-2</sup> K<sup>-1</sup>)

5 10 15 20 25