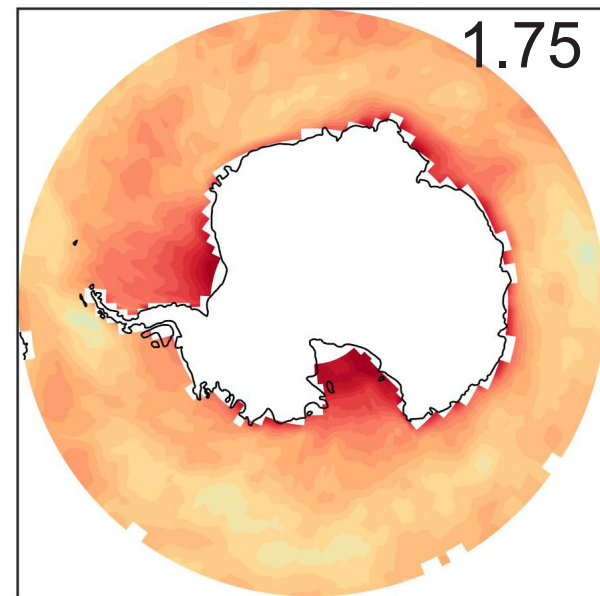


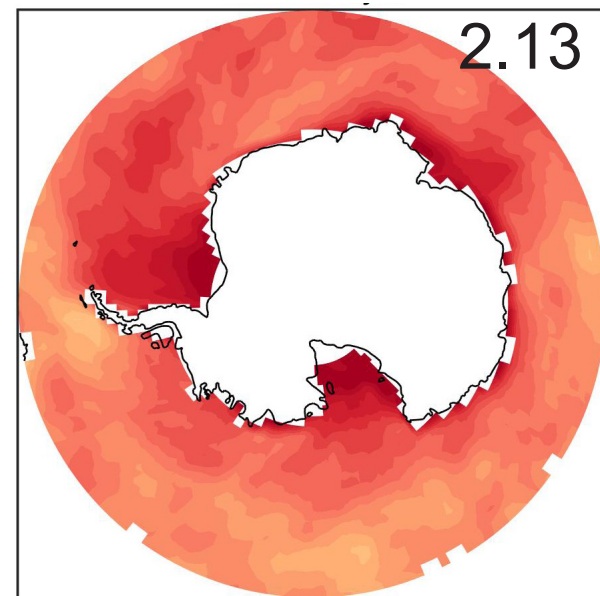
Kernel  
Isotropic model

### HADGEM2

Chris Smith

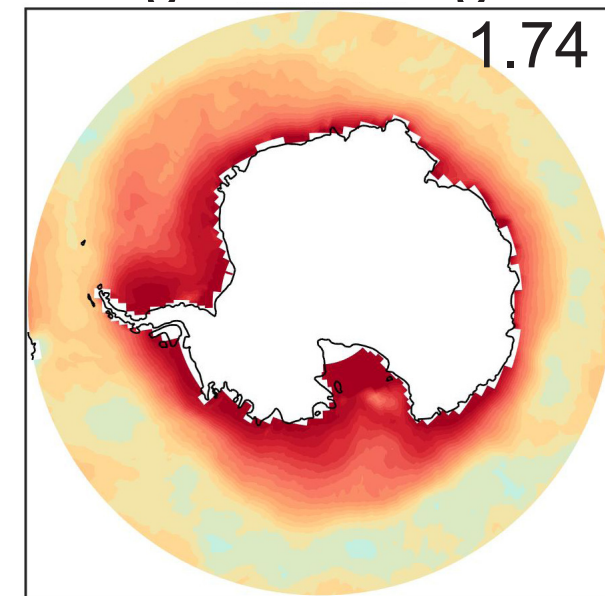


$R^2 = 0.96$

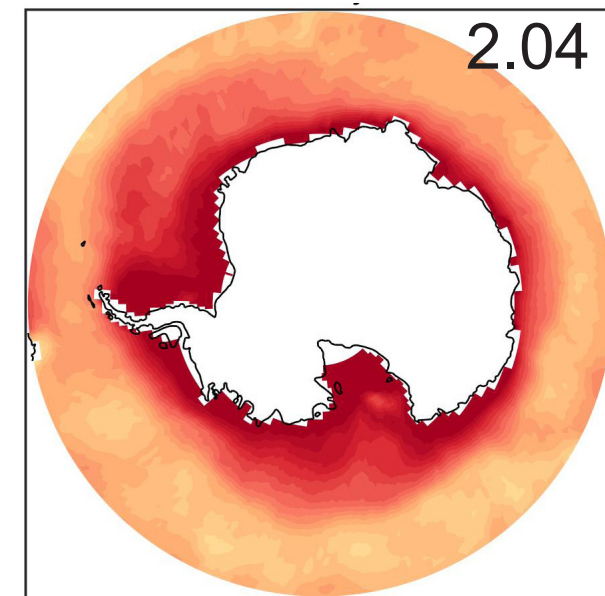


### NCAR CAM5

Angie Pendergrass

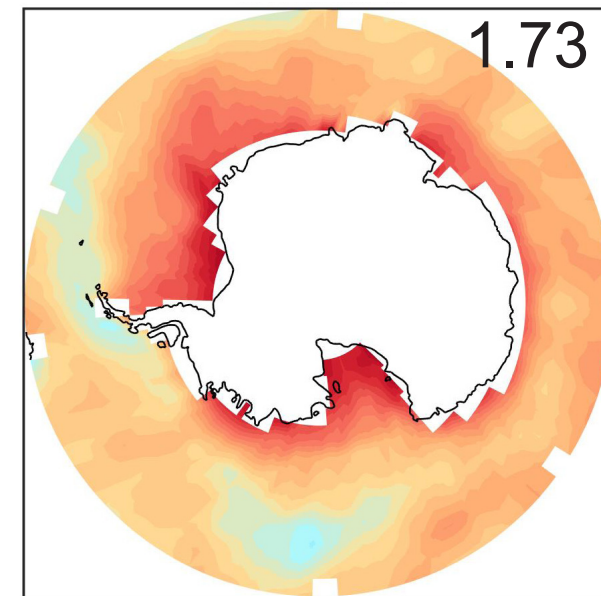


$R^2 = 0.99$



### GFDL AM2.1

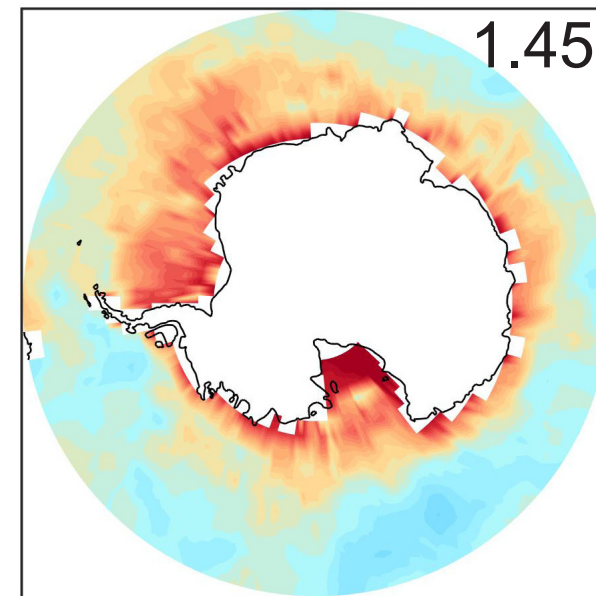
Brian Soden



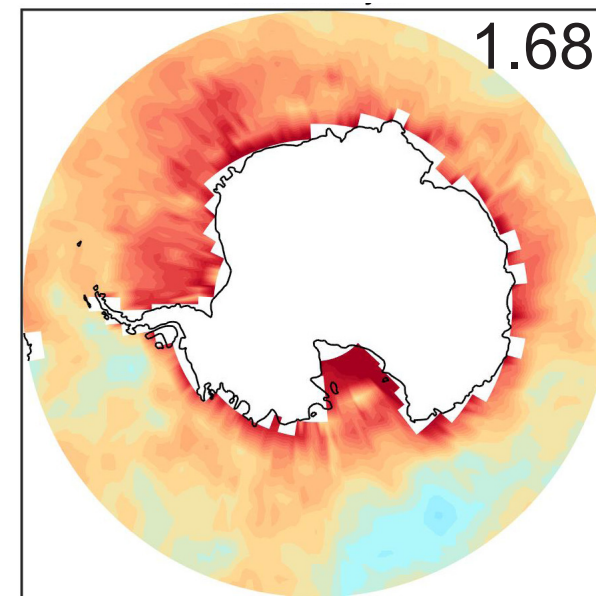
No mean state  
fields saved

### ECHAM6

Block and Mauritsen

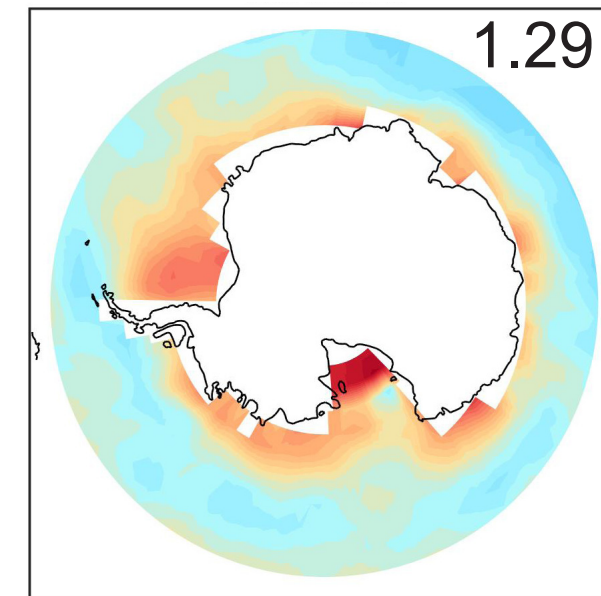


$R^2 = 0.99$

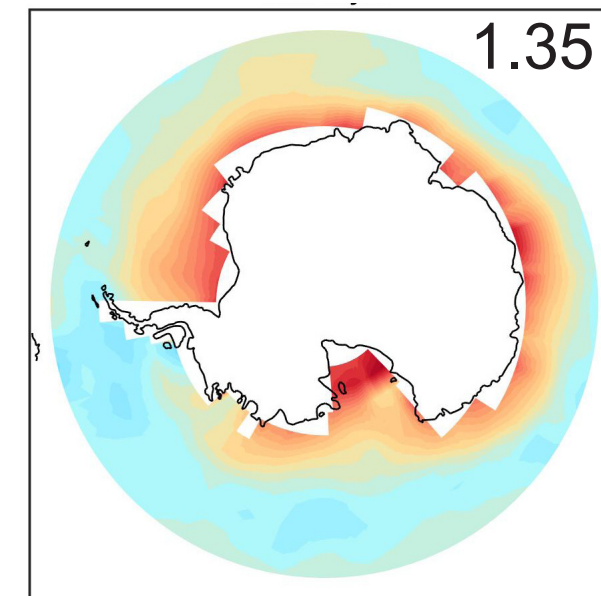


### NCAR CAM3

Karen Shell

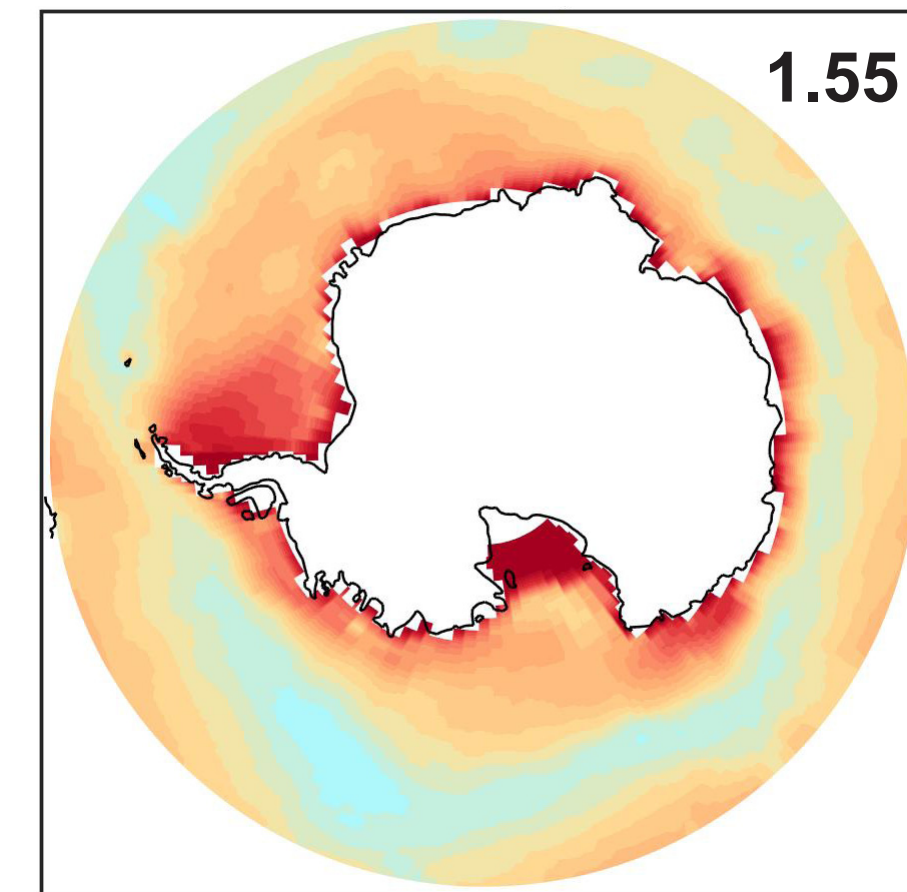


$R^2 = 0.90$



### Observational Estimate

-- CERES isotropic



Radiative Sensitivity (W m<sup>-2</sup> / 1%)

